



INDUCTION MOTOR

Totally-Enclosed Fan-Cooled NEMA Standard
EPACT Three Phase Induction Motors



● DESIGN VERSATILITY

TECO TOTALLY ENCLOSED FAN COOLED squirrel-cage induction motors are designed, manufactured and tested to meet or exceed the latest NEMA, IEEE, CSA and other international standards. These motors are suitable for all general applications where an open machine is not applicable due to severe environments such as excessive dirt, dust and/or moisture. The unique design, first-grade material and excellent workmanship make TECO Motors last much longer and give cost-efficient operation.

● Name plate

TECO		EPACT EFFICIENCY 3-PHASE INDUCTION MOTOR			
TYPE				CAT. NO.	
OUTPUT	HP	kw	FRAME	TEFC	
POLES	INS.	F	PHASE	3	
Hz					
VOLTS					
AMPS					
R. P. M.					
DESIGN	AMB	40°C			
NEMA. NOM. EFF.			NEMA. MIN. EFF.	RATING CONT.	
S. F.	1.15	BEARINGS			
CODE	SERIAL NO.				
USABLE	ON	V	NETWORK	AT	AMP.
TECO Elec. & Mach. Co., Ltd.					



31045M007M3E2C

BASIC SPECIFICATIONS

ITEM		STANDARD SPECIFICATION	
RATING	KIND OF MOTOR	SQUIRREL-CAGE INDUCTION MOTOR (SCIM).	
	DESIGN STANDARD	NEMA MG-1, MG-13	
	VOLTAGE	230/460V (208V DE-RATING OPERATION)	
	FREQUENCY	60Hz	
	OUTPUT RANGE	AEEANE: 1HP~200HP AEEANE-CF/AEVANE-CF: 1HP~100HP	
	R.P.M. (SYN.)	AEEANE:3600~900 R.P.M. (2~8 POLES). AEEANE-CF/AEVANE-CF: 3600~1200 R.P.M. (2~6 POLES).	
	TIME DUTY	CONTINUOUS, S.F. 1.15(SI, MCR)	
	FRAME NO.	AEEANE:143T~449T&TS AEEANE-CF/AEVANE-CF:143TC~405TSC.	
	PROTECTION ENCLOSURE	TOTALLY ENCLOSED (IP 44)	
	COOLING METHOD	SELF EXTERNAL FAN, SURFACE COOLING (IC 411).	
	MOUNTING	AEEANE:HORIZONTAL FOOT MOUNTING F-1 (IM 1001), F-2 INTERCHANGEABLE. AEEANE-CF:C-FACE MOUNTED WITH FOOT (IM 2101), F-1,F-2 INTERCHANGEABLE. AEVANE-CF:C-FACE MOUNTED (IM 3611).	
APPLICATION	AMBIENT CONDITION	PLACE	SHADOW, NON-HAZARDOUS.
		TEMPERATURE	-15°C~40°C
		HUMIDITY	LESS THAN 90% RH (NON-CONDENSATION).
		ALTITUDE	LESS THAN 3,300FT
	DRIVE METHOD	BELT SERVICE, HOWEVER, 2 POLE 25HP AND UP COUPLING SERVICE IS THE WAY.	
	DIRECTION OF ROTATION	BI-DIRECTIONAL	
METHOD OF STARTING	FULL VOLTAGE DIRECT ON LINE OR λ - Δ STARTING.		
CONSTRUCTION	BEARING	BRACKET MOUNTING, VACUUM DE-GASSED HIGH QUALITY OPEN BEARINGS FOR FRAME SIZE OF 284TS AND 286TS(C)~405TS(C), GREASE PRE-PACKED SHIELDED ROLLING BEARINGS FOR THE OTHERS.	
	TERMINAL BOX	PRESSED STEEL FOR FRAME SIZE OF 143T~405T, CAST IRON FOR THE OTHERS, LARGER SIZE, CAN BE SET 90°C APART, WITH CLEARANCE HOLE CABLE ENTRANCE, F-1 F-2 INTERCHANGEABLE.	
	LEAD TERMINAL	12 LEADS FOR FRAME SIZE 404T(C) AND UP, 9 LEADS FOR THE OTHERS, WITH SOLDERLESS LUG TERMINALS.	
	STATOR INSULATION	CLASS F INSULATION SYSTEM	
	PAINTING	PHENOLIC RUST PROOF BASE PLUS LACQUER SURFACE FINISHED PAINTING IN BLUE-GRAY COLOR (MUNSELL 7.5BG 4/2).	
	BOLT THREAD	AEEANE:ISO METRIC SYSTEM. AEEANE-CF/AEVANE-CF: ISO METRIC SYSTEM, UNLESS THE TREADS IN MOUNTING FACE.	
PERFORMANCE	TEST PROCEDURE	IEEE-112 METHOD B AND FULL VOLTAGE MEASURING STARTING PERFORMANCE.	
	TEMPERATURE RISE	AEEANE: NOT TO EXCEED 90°C RISE BY RESISTANCE METHOD AT S.F. 1.15; 80°C RISE AT S.F. 1.0 AEEANE-CF/AEVANE-CF: NOT TO EXCEED 90°C AT S.F. 1.15 FOR FRAME SIZE 143TC TO 365TSC, BY RESISTANCE METHOD, NOT TO EXCEED 115°C AT S.F. 1.15 FOR FRAME SIZE 404TC TO 405TSC, BY RESISTANCE METHOD.	
	OVER SPEED	125% SYN. R.P.M. FOR 1 MIN. (2,4 POLE) 150% SYN. R.P.M. FOR 1MIN. (THE OTHERS)	
	OVER TORQUE	160% RATED TORQUE FOR 15 SEC.	

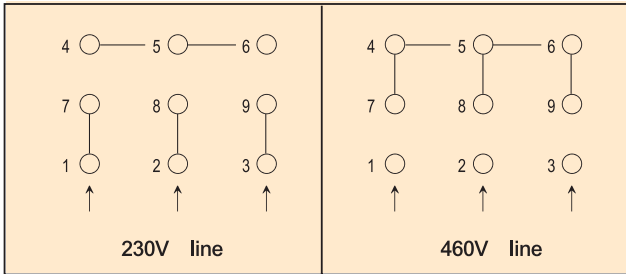
PERFORMANCE DATA

(460V)

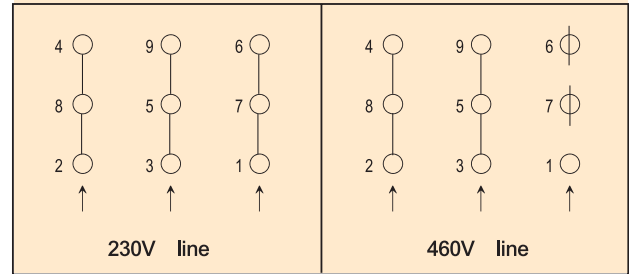
HP	FULL LOAD RPM	FRAME SIZE	EFFICIENCY(%)				POWER FACTOR(%)			CURRENT		TORQUE				ROTOR WK ² lb-ft ²	NEMA CODE LETTER
			FULL LOAD		3/4 LOAD NOM.	2/4 LOAD NOM.	FULL LOAD	3/4 LOAD	2/4 LOAD	FULL LOAD (A)	LOCKED ROTOR (A)	FULL LOAD lb-ft	LOCKED ROTOR %FLT	PULL UP %FLT	BREAK DOWN %FLT		
			NOM.	MIN.													
1	1740	143T	82.5	80.0	82.5	78.5	77.0	69.0	56.0	1.5	30	3.0	290	250	340	0.1	N
	1160	145T	80.0	77.0	80.0	77.0	63.5	54.5	42.5	1.8	30	4.5	280	250	350	0.1	N
1.5	3465	143T	82.5	80.0	81.5	78.5	85.0	79.5	69.0	2.0	40	2.3	370	340	370	0.1	M
	1730	145T	84.0	81.5	84.0	82.5	80.5	73.5	61.5	2.1	40	4.6	280	250	320	0.1	M
	1175	182T	85.5	82.5	86.5	82.5	66.5	58.0	46.0	2.5	40	6.7	200	180	330	0.3	M
2	3455	145T	84.0	81.5	84.0	82.5	88.5	84.5	75.5	2.5	50	3.0	370	340	380	0.1	L
	1725	145T	84.0	81.5	84.0	84.0	82.5	76.5	65.0	2.7	50	6.1	270	200	300	0.1	L
	1175	184T	86.5	84.0	87.5	84.0	67.0	59.0	46.5	3.2	50	8.9	210	190	340	0.4	L
3	3480	182T	85.5	82.5	86.5	85.5	90.0	87.0	78.5	3.7	64	4.5	300	270	350	0.2	K
	1760	182T	87.5	85.5	88.5	87.5	82.5	76.5	65.0	3.9	64	8.9	220	160	350	0.3	K
	1165	213T	87.5	85.5	88.5	86.5	76.5	70.5	59.0	4.2	64	13.5	200	180	310	0.7	K
5	3485	184T	87.5	85.5	88.5	88.5	91.5	90.0	83.5	5.8	92	7.5	270	230	340	0.3	J
	1750	184T	87.5	85.5	88.5	86.5	86.5	83.0	74.0	6.2	92	15.0	215	135	310	0.5	J
	1165	215T	87.5	85.5	88.5	86.5	76.5	71.0	59.5	7.0	92	22.5	215	200	340	1.1	J
7.5	3500	213T	88.5	86.5	88.5	87.5	87.0	84.5	77.0	9.1	127	11.3	230	200	300	0.3	H
	1760	213T	89.5	87.5	89.5	88.5	88.0	84.5	75.5	8.9	127	22.4	240	175	300	0.8	H
	1175	254T	89.5	87.5	90.2	88.5	81.0	75.5	64.5	9.7	127	33.5	240	210	265	2.2	H
10	3510	215T	89.5	87.5	91.0	90.2	90.0	88.5	85.0	11.6	162	15.0	220	170	270	0.5	H
	1745	215T	89.5	87.5	90.2	89.5	89.5	86.5	80.0	11.7	162	30.1	200	155	255	0.9	H
	1170	256T	89.5	87.5	89.5	87.5	82.5	78.0	67.5	12.7	162	44.9	250	200	270	2.5	H
15	3525	254T	90.2	88.5	91.0	90.2	91.5	91.0	88.0	17.0	232	22.3	210	155	250	1.1	G
	1765	254T	91.0	89.5	91.0	90.2	88.0	85.5	77.5	17.5	232	44.6	220	155	250	2.1	G
	1175	284T	90.2	88.5	90.2	90.2	83.0	80.5	73.0	18.8	232	67.0	230	190	240	6.3	G
20	3525	256T	90.2	88.5	91.7	91.7	92.0	91.5	89.0	22.6	290	29.8	210	160	240	1.2	G
	1760	256T	91.0	89.5	92.4	92.4	88.0	85.5	78.5	23.4	290	59.7	210	160	250	2.7	G
	1170	286T	90.2	88.5	91.0	91.0	83.5	81.5	74.5	24.9	290	89.8	220	180	230	7.6	G
25	3535	284TS	91.0	89.5	92.4	91.7	90.5	90.0	85.5	28.4	365	37.1	200	170	250	1.7	G
	1755	284T	92.4	91.0	93.0	93.6	89.0	88.0	84.0	28.5	365	74.8	225	160	230	4.4	G
	1175	324T	91.7	90.2	93.0	93.0	81.5	79.0	71.0	31.3	365	111.7	210	180	230	10.4	G
30	3530	286TS	91.0	89.5	91.7	91.0	91.0	91.0	88.0	33.9	435	44.6	205	155	245	1.9	G
	1755	286T	92.4	91.0	93.6	93.6	88.0	87.0	81.5	34.5	435	89.8	220	180	250	5.0	G
	1175	326T	91.7	90.2	93.6	93.0	80.5	78.0	70.8	38.1	435	134.1	220	170	230	11.4	G
40	3550	324TS	91.7	90.2	92.4	91.7	89.5	89.0	84.5	45.6	580	59.2	170	140	250	3.6	G
	1765	324T	93.0	91.7	93.6	93.6	89.0	88.5	84.5	45.2	580	119.0	210	165	220	8.6	G
	1180	364T	93.0	91.7	93.6	93.0	86.5	84.5	78.0	46.6	580	178.0	215	180	230	17.9	G
50	3550	326TS	92.4	91.0	93.0	92.4	90.5	89.5	86.0	56.0	725	74.0	160	145	260	4.5	G
	1765	326T	93.0	91.7	93.6	94.1	89.5	89.0	85.0	56.2	725	148.7	205	165	225	10.1	G
	1180	365T	93.0	91.7	93.6	93.6	85.5	83.0	77.5	58.9	725	222.5	200	180	200	21.4	G
60	3545	364TS	93.0	91.7	93.6	93.0	93.0	92.5	90.5	65.0	870	88.9	140	130	240	7.4	G
	1770	364T	93.6	92.4	94.5	94.1	86.5	84.5	78.0	69.4	870	178.0	200	165	250	10.8	G
	1180	404T	93.6	92.4	94.1	94.1	88.0	86.5	80.5	68.2	870	267.0	210	190	260	30.3	G
75	3540	365TS	93.0	91.7	93.6	93.6	93.5	93.0	91.0	80.8	1085	111.2	135	125	230	8.7	G
	1770	365T	94.1	93.0	94.1	94.1	87.5	84.5	77.5	85.3	1085	222.5	200	180	250	14.7	G
	1180	405T	93.6	92.4	94.1	94.1	88.5	87.0	82.0	84.8	1085	333.7	210	182	240	36.2	G
100	881	444T	92.4	91.0	91.8	90.2	79.5	76.5	68	95.6	548	446	130	110	210	55.1	B
	3560	405TS	93.6	92.4	95.0	95.0	91.5	90.5	88.0	109.3	1450	147.5	150	130	280	10.0	G
	1775	405T	94.5	93.6	95.0	95.0	89.0	87.5	82.5	111.3	1450	295.8	200	165	250	26.6	G
	1178	444T	94.1	93.0	93.6	92.4	83.5	80.0	71.5	119.0	725	446	200	156	220	56.4	C
125	881	445T	92.4	91.0	91.8	90.2	80.0	77.0	68.5	127.0	725	593	130	110	210	72.8	B
	3564	445TS	94.5	93.6	94.1	93.0	89.5	86.7	83.5	138.0	907.5	184	108	87	220	16.6	B
	1776	444T	94.5	93.6	94.1	93.0	87.5	85.5	80.3	142.0	907.5	370	200	145	220	44.3	C
	1180	445T	94.1	93.0	93.6	92.4	83.0	78.5	69.5	150.0	907.5	556	200	153	220	66.0	C
150	883	447T	93.0	91.7	92.4	91.0	81.0	78.0	69.5	155.0	907.5	739	120	100	200	140	B
	3564	445TS	94.5	93.6	94.1	93.0	90.2	87.6	86.4	165.0	1085	221	107	87	210	18.0	B
	1776	445T	95.0	94.1	94.5	93.6	88.0	86.1	81.0	168.0	1085	443	200	143	210	51.6	C
	1180	447T	95.0	94.1	94.5	93.6	86.5	83.7	75.7	171.0	1085	667	200	152	210	107.0	C
200	883	449T	93.0	91.7	92.4	91.0	81.5	78.5	70.0	185.0	1085	887	120	100	200	166	B
	3575	447TS	95.0	94.1	94.5	93.6	90.0	87.5	83.0	219.0	1450	294	103	82	210	31.5	B
	1778	447T	95.0	94.1	94.5	93.6	88.5	86.5	81.5	223.0	1450	587	200	143	210	72.4	C
1182	449T	95.0	94.1	94.5	93.6	86.5	83.8	76.0	228.0	1450	888	200	150	210	124.0	C	

● CONNECTION DIAGRAMS

1. 3/4 HP - 5 HP: connected internally
Across-the-line Starting

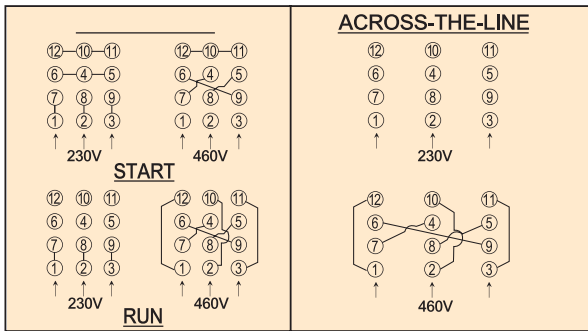


2. 7 1/2 HP - Frames 365T: Δ connected intern.
Across-the-line Starting

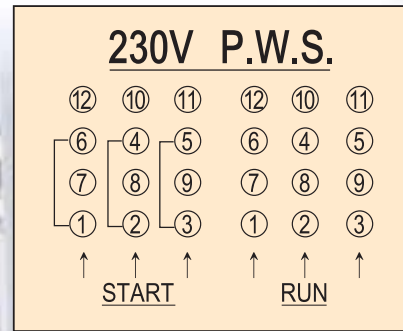


3. Frame 404T and larger

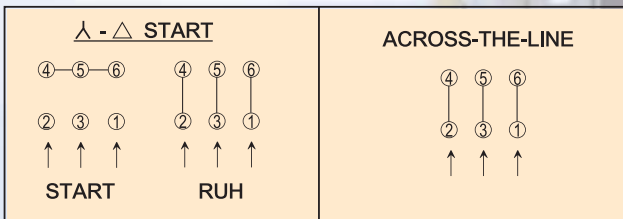
A. up to 125HP (12 leads)



A-1. up to 125HP (12 leads)



B. 125HP and up (6 leads)



● MOUNTING ARRANGEMENT(IM)

Foot Mounted		Flange Mounted		Foot/Flange Mounted	
IM-1001 (IM B3)		IM-3601 (IM B14)		IM-2101 (IM B34)	
Horizontal Shaft Foot Mounted		Horizontal Shaft "C" type flange at D.E. no feet.			
IM-1011 (IM V5)		IM-3611 (IM V18)			
Vertical Shaft Wall mounted. Shaft down.		Vertical Shaft "C" type flange at D.E. Shaft down. No feet			

Totally-Enclosed Fan-Cooled Horizontal Foot-Mounted, Type AEEANE

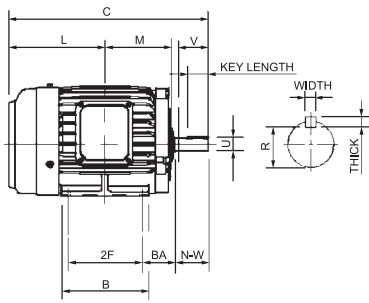


FIG.1

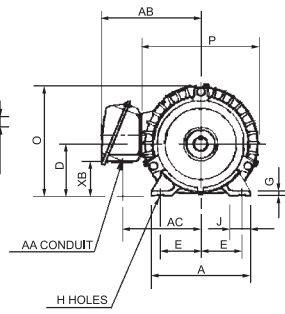


FIG.2

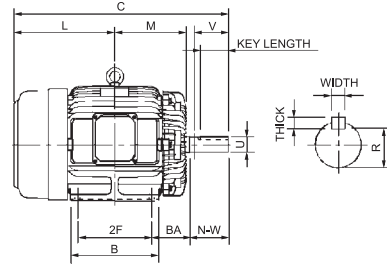


FIG.3

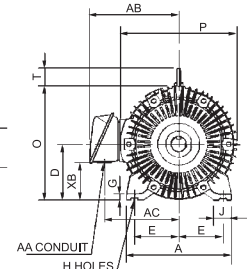


FIG.4

OUTPUT (HP)				FRAME SIZE (EH)	FIG. NO.	MOUNTING					A	B	C	CL1	CL2	D	G	J	K	L
2P	4P	6P	8P			E	2F/2F1	2F2	H	BA										
1.5	1	—	—	143T	1	2.75	4.00	—	0.34	2.25	6.70	5.10	12.47	—	—	3.50	0.35	1.40	—	5.96
2	1.5	1	—	145T		2.75	5.00	—	0.34	2.25	6.70	5.90	13.46	—	—	3.50	0.35	1.40	—	6.46
3	3	1.5	—	182T	2	3.75	4.50	—	0.41	2.75	8.80	5.90	14.77	—	—	4.50	0.65	1.75	—	7.03
5	5	2	—	184T		3.75	5.50	—	0.41	2.75	8.80	6.90	15.79	—	—	4.50	0.65	1.75	—	7.54
7.5	7.5	3	—	213T	3	4.25	5.50	—	0.41	3.50	9.85	6.90	18.09	—	—	5.25	0.70	1.75	—	8.46
10	10	5	—	215T		4.25	7.00	—	0.41	3.50	9.85	8.35	19.59	—	—	5.25	0.70	1.75	—	9.21
15	15	7.5	—	254T	4	5.00	8.25	—	0.53	4.25	11.80	9.85	23.60	—	—	6.25	0.65	1.95	—	11.23
20	20	10	—	256T		5.00	10.00	—	0.53	4.25	11.80	11.80	25.34	—	—	6.25	0.65	1.95	—	12.09
—	25	15	—	284T	5	5.50	9.50	—	0.53	4.75	14.00	11.70	26.74	—	—	7.00	0.70	2.95	—	12.62
25	—	—	—	284TS		5.50	9.50	—	0.53	4.75	14.00	11.70	25.37	—	—	7.00	0.70	2.95	—	12.62
—	30	20	—	286T	6	5.50	11.00	—	0.53	4.75	14.00	13.20	28.24	—	—	7.00	0.70	2.95	—	13.37
30	—	—	—	286TS		5.50	11.00	—	0.53	4.75	14.00	13.20	26.87	—	—	7.00	0.70	2.95	—	13.37
—	40	25	—	324T	7	6.25	10.50	—	0.66	5.25	15.75	12.80	29.75	—	—	8.00	1.10	3.15	—	14.00
40	—	—	—	324TS		6.25	10.50	—	0.66	5.25	15.75	12.80	28.25	—	—	8.00	1.10	3.15	—	14.00
—	50	30	—	326T	8	6.25	12.00	—	0.66	5.25	15.75	14.35	31.24	—	—	8.00	1.10	3.15	—	14.74
50	—	—	—	326TS		6.25	12.00	—	0.66	5.25	15.75	14.35	29.74	—	—	8.00	1.10	3.15	—	14.74
—	60	40	—	364T	9	7.00	11.25	—	0.66	5.88	17.70	13.75	32.51	—	—	9.00	1.30	3.55	—	15.13
60	—	—	—	364TS		7.00	11.25	—	0.66	5.88	17.70	13.75	30.38	—	—	9.00	1.30	3.55	—	15.13
—	75	50	—	365T	10	7.00	12.25	—	0.66	5.88	17.70	14.75	33.50	—	—	9.00	1.30	3.55	—	15.61
75	—	—	—	365TS		7.00	12.25	—	0.66	5.88	17.70	14.75	31.37	—	—	9.00	1.30	3.55	—	15.61
—	—	60	—	404T	11	8.00	12.25	—	0.81	6.62	19.68	15.15	36.50	—	—	10.00	1.57	3.93	—	16.50
—	100	75	—	405T		8.00	13.75	—	0.81	6.62	19.68	16.73	37.99	—	—	10.00	1.57	3.93	—	17.24
100	—	—	—	405TS	12	8.00	13.75	—	0.81	6.62	19.68	16.73	34.99	—	—	10.00	1.57	3.93	—	17.24
—	125	100	75	444T		9.00	14.50	—	13/16	7.50	22.05	17.50	44.00	13.5	—	11.00	1.40	4.35	4.35	20.75
125	—	—	—	444TS	13	9.00	14.50	—	13/16	7.50	22.05	17.50	40.25	13.5	—	11.00	1.40	4.35	4.35	20.75
—	150	125	100	445T		9.00	16.50	14.5	13/16	7.50	22.05	19.50	46.00	13.5	15.5	11.00	1.40	4.35	5.10	21.75
150	—	—	—	445TS	14	9.00	16.50	14.5	13/16	7.50	22.05	19.50	42.25	13.5	15.5	11.00	1.40	4.35	5.10	21.75
—	200	150	125	447T		9.00	20.00	16.5	13/16	7.50	22.05	23.25	49.50	13.5	17.0	11.00	1.40	4.35	6.70	23.50
200	—	—	—	447TS	15	9.00	20.00	16.5	13/16	7.50	22.05	23.25	45.75	13.5	17.0	11.00	1.40	4.35	6.70	23.50
—	—	200	150	449T		9.00	25.00	20.0	13/16	7.50	22.05	27.95	54.50	13.5	18.5	11.00	1.40	4.35	8.25	26.00

*Dimension in inches

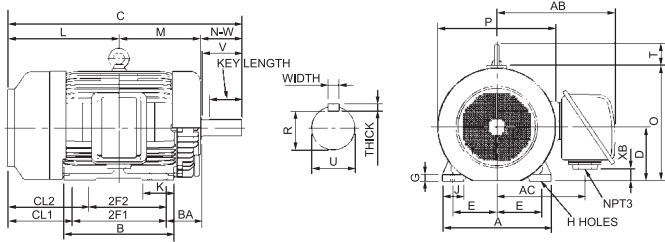


FIG.5

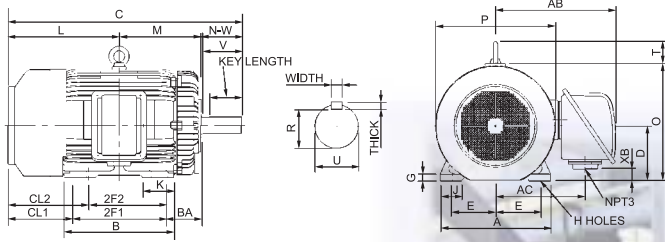


FIG.6

Note:

1. Dimension D tolerance :
 +0.00 inches, -0.03 inches (Frame 143T-405TS).
 +0.00 inches, -0.06 inches (Frames 444T and larger).
2. Dimension U tolerance :
 +0.000 inches, -0.0005 inches (Frame 143T-215T).
 +0.000 inches, -0.001 inches (Frames 254T and larger).
3. Dimension R tolerance : +0.000 inches, -0.015 inches.
4. Dimension V is the length of straight part of shaft.

M	O	P	T	KEY			KEY SEAT R	TERMINAL HOUSING				SHAFT EXTENSION			BEARINGS A		P.PROX. WEIGHT LBS
				WIDTH	THICK	LENGTH		AA	AB	AC	XB	N-W	U	V	DRIVE END	OPPOSITE DRIVE END	
4.00	7.45	7.87	—	0.188	0.188	1.41	0.771	1.10	6.18	4.92	2.52	2.25	0.875	2.20	6205ZZ	6205ZZ	44
4.50	7.45	7.87	—	0.188	0.188	1.41	0.771	1.10	6.18	4.92	2.52	2.25	0.875	2.20	6205ZZ	6205ZZ	53
4.85	9.15	9.37	1.30	0.250	0.250	1.78	0.986	1.10	7.44	6.06	3.36	2.75	1.125	2.70	6306ZZ	6306ZZ	81
5.35	9.15	9.37	1.30	0.250	0.250	1.78	0.986	1.10	7.44	6.06	3.36	2.75	1.125	2.70	6306ZZ	6306ZZ	97
6.05	10.60	10.75	1.65	0.312	0.312	2.41	1.201	1.38	8.86	7.07	3.32	3.38	1.375	3.30	6308ZZ	6306ZZ	147
6.80	10.60	10.75	1.65	0.312	0.312	2.41	1.201	1.38	8.86	7.07	3.32	3.38	1.375	3.30	6308ZZ	6306ZZ	174
7.98	12.80	13.15	2.00	0.375	0.375	2.91	1.416	1.38	10.24	8.58	4.37	4.00	1.625	3.90	6309ZZ	6307ZZ	260
8.86	12.80	13.15	2.00	0.375	0.375	2.91	1.416	1.38	10.24	8.58	4.37	4.00	1.625	3.90	6309ZZ	6307ZZ	301
9.11	14.50	15.05	2.00	0.500	0.500	3.28	1.591	2.05	12.13	9.84	4.59	4.62	1.875	4.50	6311ZZ	6310ZZ	416
9.31	14.50	15.05	2.00	0.375	0.375	1.93	1.416	2.05	12.13	9.84	4.59	3.25	1.625	3.20	6211C3	6211C3	381
9.86	14.50	15.05	2.00	0.500	0.500	3.28	1.591	2.05	12.13	9.84	4.59	4.62	1.875	4.50	6311ZZ	6310ZZ	449
10.06	14.50	15.05	2.00	0.375	0.375	1.93	1.416	2.05	12.13	9.84	4.59	3.25	1.625	3.20	6211C3	6211C3	433
10.29	16.20	16.55	2.35	0.500	0.500	3.91	1.845	2.56	13.47	10.98	5.19	5.25	2.125	5.15	6312	6212	626
10.29	16.20	16.55	2.35	0.500	0.500	2.03	1.591	2.56	13.47	10.98	5.19	3.75	1.875	3.65	6312C3	6212C3	554
11.04	16.20	16.55	2.35	0.500	0.500	3.91	1.845	2.56	13.47	10.98	5.19	5.25	2.125	5.15	6312	6212	651
11.04	16.20	16.55	2.35	0.500	0.500	2.03	1.591	2.56	13.47	10.98	5.19	3.75	1.875	3.65	6312C3	6212C3	616
11.29	17.80	18.05	2.80	0.625	0.625	4.28	2.021	3.62	15.10	12.28	6.18	5.88	2.375	5.75	6313	6213	755
11.29	17.80	18.05	2.80	0.500	0.500	2.03	1.591	3.62	15.10	12.28	6.18	3.75	1.875	3.65	6312C3	6212C3	759
11.79	17.80	18.05	2.80	0.625	0.625	4.28	2.021	3.62	15.10	12.28	6.18	5.88	2.375	5.75	6313	6213	834
11.79	17.80	18.05	2.80	0.500	0.500	2.03	1.591	3.62	15.10	12.28	6.18	3.75	1.875	3.65	6312C3	6212C3	818
12.52	20.00	20.07	2.80	0.750	0.750	5.65	2.450	3.62	19.07	14.33	5.63	7.25	2.875	7.15	6317	6313	1164
13.27	20.00	20.07	2.80	0.750	0.750	5.65	2.450	3.62	19.07	14.33	5.63	7.25	2.875	7.15	6317	6313	1217
13.27	20.00	20.07	2.80	0.500	0.500	2.78	1.845	3.62	19.07	14.33	5.63	4.25	2.125	4.15	6313C3	6313C3	1184
14.40	23.55	24.00	4.35	0.875	0.875	6.91	2.880	—	24.00	17.90	2.40	8.50	3.375	8.00	NU318C3	6316	1600
14.40	23.55	24.00	4.35	0.625	0.625	3.03	2.021	—	24.00	17.90	2.40	4.75	2.375	4.50	6314C3	6314C3	1400
15.40	23.55	24.00	4.35	0.875	0.875	6.91	2.880	—	24.00	17.90	2.40	8.50	3.375	8.00	NU318C3	6316	1900
15.40	23.55	24.00	4.35	0.625	0.625	3.03	2.021	—	24.00	17.90	2.40	4.75	2.375	4.50	6314C3	6314C3	1600
17.15	23.55	24.00	4.35	0.875	0.875	6.91	2.880	—	24.00	17.90	2.40	8.50	3.375	8.00	NU320C3	6316	2450
17.15	23.55	24.00	4.35	0.625	0.625	3.03	2.021	—	24.00	17.90	2.40	4.75	2.375	4.50	6314C3	6314C3	2200
19.65	23.55	24.00	4.35	0.875	0.875	6.91	2.880	—	24.00	17.90	2.40	8.50	3.375	8.00	NU320C3	6316	2800

Totally-Enclosed Fan-Cooled C-Face Mounted with Feet, Type AEEANE-CF

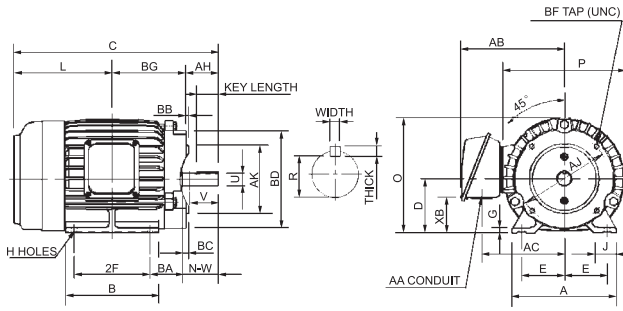


FIG.1

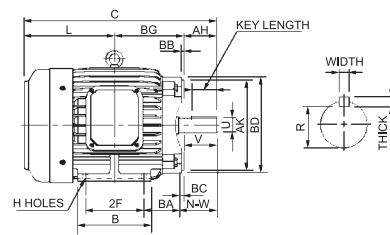


FIG.3

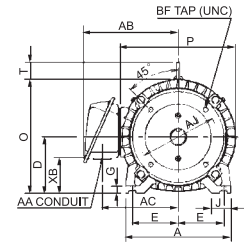


FIG.4

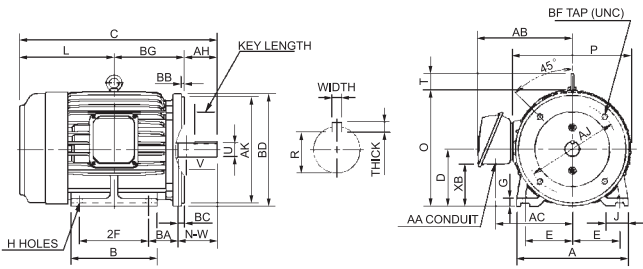
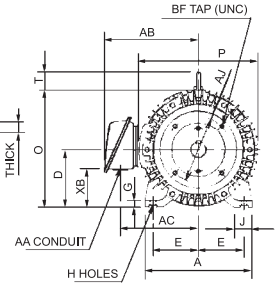
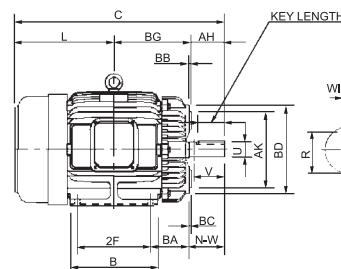


FIG.2



OUTPUT(HP)			FRAME SIZE (EH)	FIG. NO.	MOUNTING				A	B	C	D	G	J	L	O	P	T	AH	AJ	AK
2P	4P	6P			E	2F	H	BA													
1.5	1	—	143TC	1	2.75	4.00	0.34	2.25	6.70	5.10	12.47	3.50	0.35	1.40	5.96	7.45	7.87	—	2.12	5.875	4.50
2	1.5 2	1	145TC		2.75	5.00	0.34	2.25	6.70	5.90	13.46	3.50	0.35	1.40	6.46	7.45	7.87	—	2.12	5.875	4.50
3	3	1.5	182TC	2	3.75	4.50	0.41	2.75	8.80	5.90	14.75	4.50	0.65	1.75	7.00	9.15	9.37	1.30	2.62	7.250	8.50
5	5	2	184TC		3.75	5.50	0.41	2.75	8.80	6.90	15.79	4.50	0.65	1.75	7.54	9.15	9.37	1.30	2.62	7.250	8.50
7.5	7.5	3	213TC	3	4.25	5.50	0.41	3.50	9.85	6.90	18.09	5.25	0.70	1.75	8.46	10.60	10.75	1.65	3.12	7.250	8.50
10	10	5	215TC		4.25	7.00	0.41	3.50	9.85	8.35	19.59	5.25	0.70	1.75	9.21	10.60	10.75	1.65	3.12	7.250	8.50
15	15	7.5	254TC	4	5.00	8.25	0.53	4.25	11.80	9.85	23.60	6.25	0.65	1.95	11.23	12.80	13.15	2.00	3.75	7.250	8.50
20	20	10	256TC		5.00	10.00	0.53	4.25	11.80	11.80	25.34	6.25	0.65	1.95	12.09	12.80	13.15	2.00	3.75	7.250	8.50
—	25	15	284TC	5	5.50	9.50	0.53	4.75	14.00	11.70	26.74	7.00	0.70	2.95	12.62	14.50	15.05	2.00	4.37	9.000	10.50
25	—	—	284TSC		5.50	9.50	0.53	4.75	14.00	11.70	25.37	7.00	0.70	2.95	12.62	14.50	15.05	2.00	3.00	9.000	10.50
—	30	20	286TC	4	5.50	11.00	0.53	4.75	14.00	13.20	28.24	7.00	0.70	2.95	13.37	14.50	15.05	2.00	4.37	9.000	10.50
30	—	—	286TSC		5.50	11.00	0.53	4.75	14.00	13.20	26.87	7.00	0.70	2.95	13.37	14.50	15.05	2.00	3.00	9.000	10.50
—	40	25	324TC	5	6.25	10.50	0.66	5.25	15.75	12.80	29.75	8.00	1.10	3.15	14.00	16.20	16.55	2.35	5.00	11.000	12.50
40	—	—	324TSC		6.25	10.50	0.66	5.25	15.75	12.80	28.25	8.00	1.10	3.15	14.00	16.20	16.55	2.35	3.50	11.000	12.50
—	50	30	326TC	5	6.25	12.00	0.66	5.25	15.75	14.35	31.24	8.00	1.10	3.15	14.74	16.20	16.55	2.35	5.00	11.000	12.50
50	—	—	326TSC		6.25	12.00	0.66	5.25	15.75	14.35	29.74	8.00	1.10	3.15	14.74	16.20	16.55	2.35	3.50	11.000	12.50
—	60	40	364TC	6	7.00	11.25	0.66	5.88	17.70	13.75	32.51	9.00	1.30	3.55	15.13	17.80	18.05	2.80	5.63	11.000	12.50
60	—	—	364TSC		7.00	11.25	0.66	5.88	17.70	13.75	30.38	9.00	1.30	3.55	15.13	17.80	18.05	2.80	3.50	11.000	12.50
—	75	50	365TC	6	7.00	12.25	0.66	5.88	17.70	14.75	33.49	9.00	1.30	3.55	15.61	17.80	18.05	2.80	5.63	11.000	12.50
75	—	—	365TSC		7.00	12.25	0.66	5.88	17.70	14.75	31.36	9.00	1.30	3.55	15.61	17.80	18.05	2.80	3.50	11.000	12.50
—	—	60	404TC	6	8.00	12.25	0.81	6.62	19.68	15.15	36.50	10.00	1.57	3.93	16.50	20.00	20.07	2.80	7.00	11.000	12.50
—	100	75	405TC		8.00	13.75	0.81	6.62	19.68	16.73	37.99	10.00	1.57	3.93	17.24	20.00	20.07	2.80	7.00	11.000	12.50
100	—	—	405TSC		8.00	13.75	0.81	6.62	19.68	16.73	34.99	10.00	1.57	3.93	17.24	20.00	20.07	2.80	4.00	11.000	12.50

*Dimension in inches

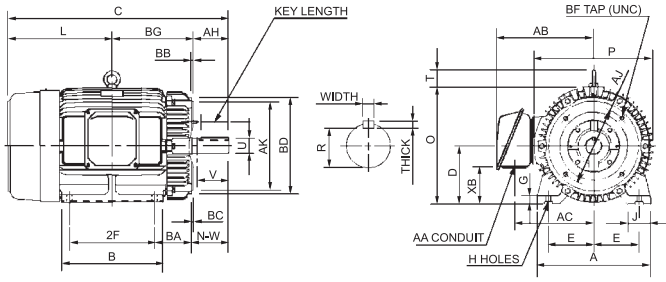


FIG.5

Note:

1. Dimension D tolerance : +0.00 inches, -0.03 inches.
2. Dimension AK tolerance :
+0.000 inches, -0.003 inches(Frame 143TC-286TSC).
+0.000 inches, -0.005 inches(Frame 324TC and larger).
3. Dimension U tolerance :
+0.000 inches, -0.0005 inches(Frame 143TC -215TC).
+0.000 inches, -0.001 inches(Frame 254TC and larger).
4. Dimension R tolerance : +0.000 inches, -0.015 inches.
5. Dimension V is the length of straight part of shaft.

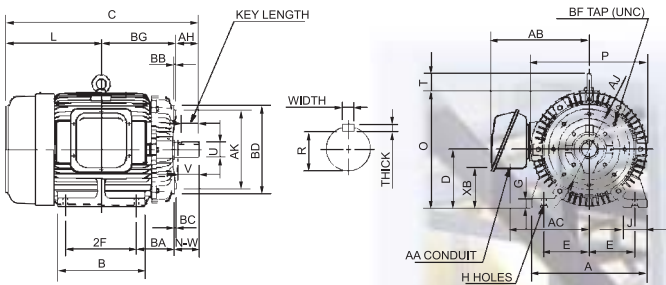


FIG.6

BB	BC	BD	BF		BG	KEY			KEY SEAT R	TERMINAL HOUSING				SHAFT EXTENSION			BEARINGS		APPROX. WEIGHT LBS
			NO.	SIZE		WIDTH	THICK	LENGTH		AA	AB	AC	XB	N-W	U	V	DRIVE END	OPPOSITE DRIVE END	
0.16	0.13	6.40	4	3/8-16	4.39	0.188	0.188	1.41	0.771	1.10	6.18	4.92	2.52	2.25	0.875	2.20	6205ZZ	6205ZZ	47
0.16	0.13	6.40	4	3/8-16	4.88	0.188	0.188	1.41	0.771	1.10	6.18	4.92	2.52	2.25	0.875	2.20	6205ZZ	6205ZZ	56
0.25	0.13	9.00	4	1/2-13	5.13	0.250	0.250	1.78	0.986	1.10	7.44	6.06	3.36	2.75	1.125	2.70	6306ZZ	6306ZZ	84
0.25	0.13	9.00	4	1/2-13	5.63	0.250	0.250	1.78	0.986	1.10	7.44	6.06	3.36	2.75	1.125	2.70	6306ZZ	6306ZZ	100
0.25	0.26	9.00	4	1/2-13	6.51	0.312	0.312	2.41	1.201	1.38	8.86	7.07	3.32	3.38	1.375	3.30	6308ZZ	6306ZZ	151
0.25	0.26	9.00	4	1/2-13	7.26	0.312	0.312	2.41	1.201	1.38	8.86	7.07	3.32	3.38	1.375	3.30	6308ZZ	6306ZZ	178
0.25	0.25	9.92	4	1/2-13	8.62	0.375	0.375	2.91	1.416	1.38	10.24	8.58	4.37	4.00	1.625	3.90	6309ZZ	6307ZZ	264
0.25	0.25	9.92	4	1/2-13	9.50	0.375	0.375	2.91	1.416	1.38	10.24	8.58	4.37	4.00	1.625	3.90	6309ZZ	6307ZZ	305
0.25	0.25	11.22	4	1/2-13	9.75	0.500	0.500	3.28	1.591	2.05	12.13	9.84	4.59	4.62	1.875	4.50	6311ZZ	6310ZZ	420
0.25	0.25	11.22	4	1/2-13	9.75	0.375	0.375	1.93	1.416	2.05	12.13	9.84	4.59	3.25	1.625	3.20	6211C3	6211C3	385
0.25	0.25	11.22	4	1/2-13	10.50	0.500	0.500	3.28	1.591	2.05	12.13	9.84	4.59	4.62	1.875	4.50	6311ZZ	6310ZZ	453
0.25	0.25	11.22	4	1/2-13	10.50	0.375	0.375	1.93	1.416	2.05	12.13	9.84	4.59	3.25	1.625	3.20	6211C3	6211C3	437
0.25	0.25	13.58	4	5/8-11	10.75	0.500	0.500	3.91	1.845	2.56	13.47	10.98	5.19	5.25	2.125	5.15	6312	6212	634
0.25	0.25	13.58	4	5/8-11	10.75	0.500	0.500	2.03	1.591	2.56	13.47	10.98	5.19	3.75	1.875	3.65	6312C3	6212C3	562
0.25	0.25	13.58	4	5/8-11	11.50	0.500	0.500	3.91	1.845	2.56	13.47	10.98	5.19	5.25	2.125	5.15	6312	6212	659
0.25	0.25	13.58	4	5/8-11	11.50	0.500	0.500	2.03	1.591	2.56	13.47	10.98	5.19	3.75	1.875	3.65	6312C3	6212C3	624
0.25	0.25	14.00	8	5/8-11	11.75	0.625	0.625	4.28	2.021	3.62	15.10	12.28	6.18	5.88	2.375	5.75	6313	6213	767
0.25	0.25	14.00	8	5/8-11	11.75	0.500	0.500	2.03	1.591	3.62	15.10	12.28	6.18	3.75	1.875	3.65	6312C3	6212C3	771
0.25	0.25	14.00	8	5/8-11	12.25	0.625	0.625	4.28	2.021	3.62	15.10	12.28	6.18	5.88	2.375	5.75	6313	6213	846
0.25	0.25	14.00	8	5/8-11	12.25	0.500	0.500	2.03	1.591	3.62	15.10	12.28	6.18	3.75	1.875	3.65	6312C3	6212C3	830
0.25	0.25	15.27	8	5/8-11	13.00	0.750	0.750	5.65	2.450	3.62	19.07	14.33	5.63	7.25	2.875	7.15	6317	6313	1017
0.25	0.25	15.27	8	5/8-11	13.75	0.750	0.750	5.65	2.450	3.62	19.07	14.33	5.63	7.25	2.875	7.15	6317	6313	1245
0.25	0.25	15.27	8	5/8-11	13.75	0.500	0.500	2.78	1.845	3.62	19.07	14.33	5.63	4.25	2.125	4.15	6313C3	6313C3	1285

Totally-Enclosed Fan-Cooled C-Face Mounted Round Frame, Type AEVANE-CF

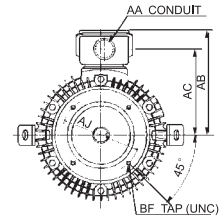
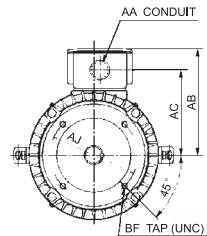
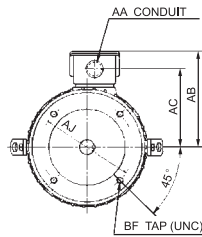
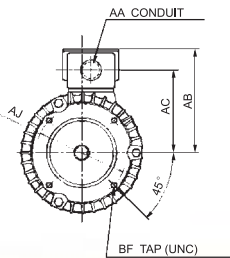
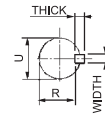
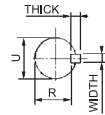
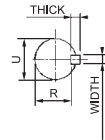
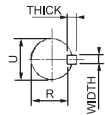
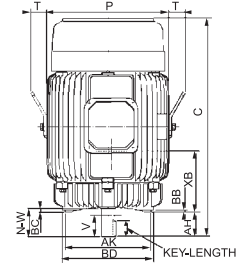
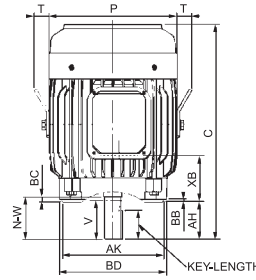
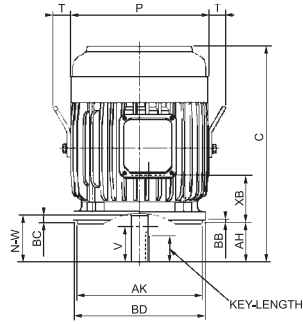
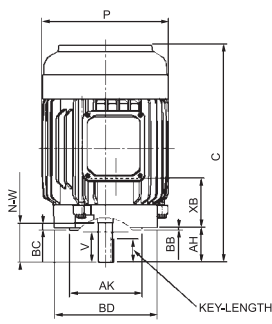


FIG.1

FIG.2

FIG.3

FIG.4

OUTPUT(HP)			FRAME SIZE (EH)	FIG. NO.	C	P	T	AH	AJ	AK	BB	BC	BD	BF
2P	4P	6P												
1.5	1	—	143TC	1	12.47	7.87	—	2.12	5.875	4.50	0.16	0.13	6.40	3/8-16 UNC
2	1.5	1	145TC		13.46	7.87	—	2.12	5.875	4.50	0.16	0.13	6.40	3/8-16 UNC
3	3	1.5	182TC	2	14.75	9.37	1.20	2.62	7.250	8.50	0.25	0.13	9.00	1/2-13 UNC
5	5	2	184TC		15.79	9.37	1.20	2.62	7.250	8.50	0.25	0.13	9.00	1/2-13 UNC
7.5	7.5	3	213TC	3	18.09	10.75	1.25	3.12	7.250	8.50	0.25	0.26	9.00	1/2-13 UNC
10	10	5	215TC		19.59	10.75	1.25	3.12	7.250	8.50	0.25	0.26	9.00	1/2-13 UNC
15	15	7.5	254TC	4	23.60	13.15	2.00	3.75	7.250	8.50	0.25	0.25	9.92	1/2-13 UNC
20	20	10	256TC		25.34	13.15	2.00	3.75	7.250	8.50	0.25	0.25	9.92	1/2-13 UNC
—	25	15	284TC	5	26.74	15.05	2.00	4.38	9.000	10.50	0.25	0.25	11.22	1/2-13 UNC
25	—	—	284TSC		25.37	15.05	2.00	3.00	9.000	10.50	0.25	0.25	11.22	1/2-13 UNC
—	30	20	286TC	4	28.24	15.05	2.00	4.38	9.000	10.50	0.25	0.25	11.22	1/2-13 UNC
30	—	—	286TS		26.87	15.05	2.00	3.00	9.000	10.50	0.25	0.25	11.22	1/2-13 UNC
—	40	25	324TC	5	29.75	16.55	2.35	5.00	11.000	12.50	0.25	0.25	13.58	5/8-11 UNC
40	—	—	324TSC		28.25	16.55	2.35	3.50	11.000	12.50	0.25	0.25	13.58	5/8-11 UNC
—	50	30	326TC	6	31.24	16.55	2.35	5.00	11.000	12.50	0.25	0.25	13.58	5/8-11 UNC
50	—	—	326TSC		29.74	16.55	2.35	3.50	11.000	12.50	0.25	0.25	13.58	5/8-11 UNC
—	60	40	364TC	6	32.51	18.05	2.80	5.63	11.000	12.50	0.25	0.25	14.00	5/8-11 UNC
60	—	—	364TSC		30.38	18.05	2.80	3.50	11.000	12.50	0.25	0.25	14.00	5/8-11 UNC
—	75	50	365TC	6	33.49	18.05	2.80	5.63	11.000	12.50	0.25	0.25	14.00	5/8-11 UNC
75	—	—	365TSC		31.36	18.05	2.80	3.50	11.000	12.50	0.25	0.25	14.00	5/8-11 UNC
—	—	60	404TC	6	36.50	20.07	2.80	7.00	11.000	12.50	0.25	0.25	15.27	5/8-11 UNC
—	100	75	405TC		37.99	20.07	2.80	7.00	11.000	12.50	0.25	0.25	15.27	5/8-11 UNC
100	—	—	405TSC	34.99	20.07	2.80	4.00	11.000	12.50	0.25	0.25	15.27	5/8-11 UNC	

*Dimension in inches

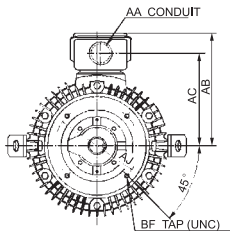
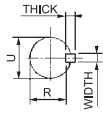
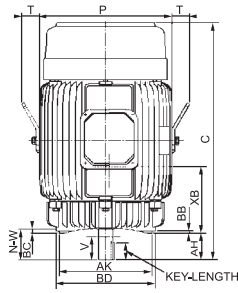
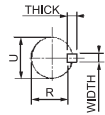
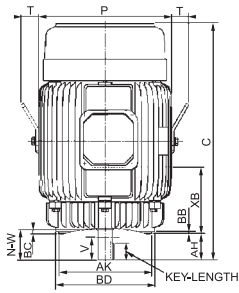


FIG.5

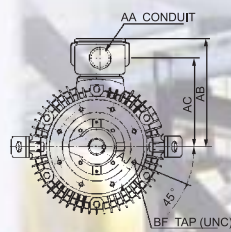


FIG.6

Note:

1. Dimension AK tolerance :
 +0.000 inches, -0.003 inches(Frame 143TC-286TSC).
 +0.000 inches, -0.005 inches(Frame 324TC and larger).
2. Dimension U tolerance :
 +0.000 inches, -0.0005 inches(Frame 143TC -215TC).
 +0.000 inches, -0.001 inches(Frame 254T Cand larger).
3. Dimension R tolerance:
 +0.000 inches, -0.015 inches.
4. Dimension V is the length of straight part of shaft.

KEY			KEYSEAT R	TERMINAL HOUSING				SHAFT EXTENSION			BEARINGS		APPROX. WEIGHT LBS
WIDTH	THICK	LENGTH		AA	AB	AC	XB	N-W	U	V	DRIVE END	OPPOSITE DRIVE END	
0.188	0.188	1.41	0.771	1.10	6.18	4.92	2.66	2.25	0.875	2.20	6205ZZ	6205ZZ	45
0.188	0.188	1.41	0.771	1.10	6.18	4.92	3.15	2.25	0.875	2.20	6205ZZ	6205ZZ	56
0.250	0.250	1.78	0.986	1.10	7.44	6.06	3.39	2.75	1.125	2.70	6306ZZ	6306ZZ	79
0.250	0.250	1.78	0.986	1.10	7.44	6.06	3.90	2.75	1.125	2.70	6306ZZ	6306ZZ	104
0.312	0.312	2.41	1.201	1.38	8.86	7.07	4.07	3.38	1.375	3.30	6308ZZ	6306ZZ	158
0.312	0.312	2.41	1.201	1.38	8.86	7.07	4.82	3.38	1.375	3.30	6308ZZ	6306ZZ	176
0.375	0.375	2.91	1.416	1.38	10.24	8.58	6.59	4.00	1.625	3.90	6309ZZ	6307ZZ	274
0.375	0.375	2.91	1.416	1.38	10.24	8.58	7.45	4.00	1.625	3.90	6309ZZ	6307ZZ	324
0.500	0.500	3.28	1.591	2.05	12.13	9.84	7.31	4.62	1.875	4.50	6311ZZ	6310ZZ	425
0.375	0.375	1.93	1.416	2.05	12.13	9.84	7.31	3.25	1.625	3.20	6211C3	6211C3	425
0.500	0.500	3.28	1.591	2.05	12.13	9.84	8.06	4.62	1.875	4.50	6311ZZ	6310ZZ	470
0.375	0.375	1.93	1.416	2.05	12.13	9.84	8.06	3.25	1.625	3.20	6211C3	6211C3	469
0.500	0.500	3.91	1.845	2.56	13.47	10.98	7.92	5.25	2.125	5.15	6312	6212	606
0.500	0.500	2.03	1.591	2.56	13.47	10.98	7.92	3.75	1.875	3.65	6312C3	6212C3	606
0.500	0.500	3.91	1.845	2.56	13.47	10.98	8.67	5.25	2.125	5.15	6312	6212	699
0.500	0.500	2.03	1.591	2.56	13.47	10.98	8.67	3.75	1.875	3.65	6312C3	6212C3	699
0.625	0.625	4.28	2.021	3.62	15.10	12.28	8.93	5.88	2.375	5.75	6313	6213	766
0.500	0.500	2.03	1.591	3.62	15.10	12.28	8.93	3.75	1.875	3.65	6312C3	6212C3	765
6.250	0.625	4.28	2.021	3.62	15.10	12.28	9.42	5.88	2.375	5.75	6313	6213	837
0.500	0.500	2.03	1.591	3.62	15.10	12.28	9.42	3.75	1.875	3.65	6312C3	6212C3	837
0.750	0.750	5.65	2.450	3.62	19.07	14.33	8.63	7.25	2.875	7.15	6317	6313	872
0.750	0.750	5.65	2.450	3.62	19.07	14.33	9.38	7.25	2.875	7.15	6317	6313	1304
0.500	0.500	2.78	1.845	3.62	19.07	14.33	9.38	4.25	2.125	4.15	6313C3	6313C3	1304

HEAD OFFICE

Teco Electric & Machinery Co. Ltd
10F No, 3-1, Yuan Cyu St.
Nan-Kang Taipei 115
Taiwan ROC
Tel: +886 2 6615 9111
www.teco.com.tw

UNITED STATES

Teco-Westinghouse Motor Company
PO Box 227 (78680-0277)
5100 N.IH35
Round Rock Texas 78681 USA
Tel: +1 512 255 4141
+1 800 873 8326
www.tecowestinghouse.com

CANADA

Teco-Westinghouse
Motors Inc. (Canada)
18060-109th Ave
Edmonton, Alberta T5S 2K2 Canada
Tel: +1 780 444 8933
Fax: (780) 486-4575
24 HR Emergency Pager:
(780) 419 7734
Toll Free: 800-661-4023
Fax Toll Free: 888-USE-TWMI
www.twmi.com

UNITED KINGDOM

Teco Electric Europe Ltd.
26 Bond, Europa Way
Old Trafford, Manchester
M17 1WF England
Tel: +44 161 877 8025
www.teco.co.uk

NETHERLANDS

Teco Electric & Machinery B.V.
Teco's European Head Office
Rivium 3e Straat 27
2909 LH Capelle a/d IJssel
The Netherlands
Tel: + 31 10 266 6633
Fax: + 31 10 202 6415

GERMANY

Teco Electric & Machinery B.V.
Niederlassung Deutschland
Marktstrasse 69
37441 Bad Sachsa
Germany
Tel: +49 5523 95340
Fax: +49 5523 953424
www.teco-westinghouse.de

SPAIN

Teco Electric & Machinery B.V.
Spain Office
C/Sancho Dávila 8 4ºF
28028 Madrid Spain
Tel: +34 91 725 1718

SOUTH AFRICA

ArmCoil Afrika (Pty) Ltd.
Unit 3 Prestige Park 127 Main Reef Road
Technikon Roodepoort
PO Box 500 Maraisburg 1700
Gauteng South Africa
Tel: +2711 763 2351
Fax: 0866 318 588
www.armcoil.co.za

AUSTRALIA

Teco Australia Pty Ltd.
335-337 Woodpark Road
Smithfield NSW 2164 Australia
Tel: +61 2 9765 8118
www.teco.com.au

NEW ZEALAND

Teco New Zealand Pty Ltd.
Unit 3 477 Great South Road
Penrose Auckland New Zealand
Tel: +64 9 526 8480

JAPAN

Sankyo Co., Ltd.
26th fl. World Trading Center Bldg.
2-4-1 Hamamatsucho Minato-ku
Tokyo Japan 105-6126
Tel: +81 3 3435 9729
Fax: +81 3 3578 8381

SINGAPORE

Teco Electric & Machinery (PTE) Ltd.
18 Chin Bee Drive
Singapore 619865
Tel: +65 6 265 4622
www.teco.com.sg

INDONESIA

P.T. Teco Multiguna Elektro
JL Bandengan Utara No. 83/1-3
Jakarta Utara-14400 Indonesia
Tel: +62 21 662 2201

CHINA

Shanghai Office
Rm 321 Building No.6
Lane 1279 Zhongshan W. Rd.
Shanghai. PRC
Tel: +86 21 5116 8255
Fax: +86 21 6278 8761

Wuxi Teco Electric & Machinery Co., Ltd.
No. 9 South Of Changjiang Road,
New Zone, Wuxi,
Jiangsu Province, PRC
Tel: +86 510 8534 2005
Fax: +86 510 8534 2001
www.wuxiteco.com

Jiangxi Teco Electric & Machinery Co., Ltd
1328 Jinggangshan Rd., Nanchang,
Jiangxi, PRC
Tel: +86 791 641 3690
Fax: +86 791 641 4228

Suzhou Teco Electric &
Machinery Co., Ltd
No. 1 Changjiang W.Rd. South-Dam
Industrial Park Liuhe Zhen
Taicang City, Suzhou,
Jiangsu Province, PRC
Tel: +86 512 5361 9901
Fax: +86 512 5396 1058

HONG KONG

Tecoson Industrial Development
(HK) Co., Ltd.
Rm 3712 Hong Kong Plaza
186-191 Connaught Rd. West
Hong Kong
Tel: +852 2858 3220

MALAYSIA

STE Marketing SDN BHD
6 Jalan Firma 2 Kawasan Perind. Tebrau 1
81100 Johor Bahru Johor Malaysia
Tel: +60 7 354 8008

THAILAND

Teco Electric & Machinery
(Thai) Co., Ltd.
128/1 Soi Watsrivarenoi
Moo 7 Bangna-Trad Road Km 18
Bangchalong Bangplee
Samuthprakarn 10540 Thailand
Tel: +662 3371311- 20

